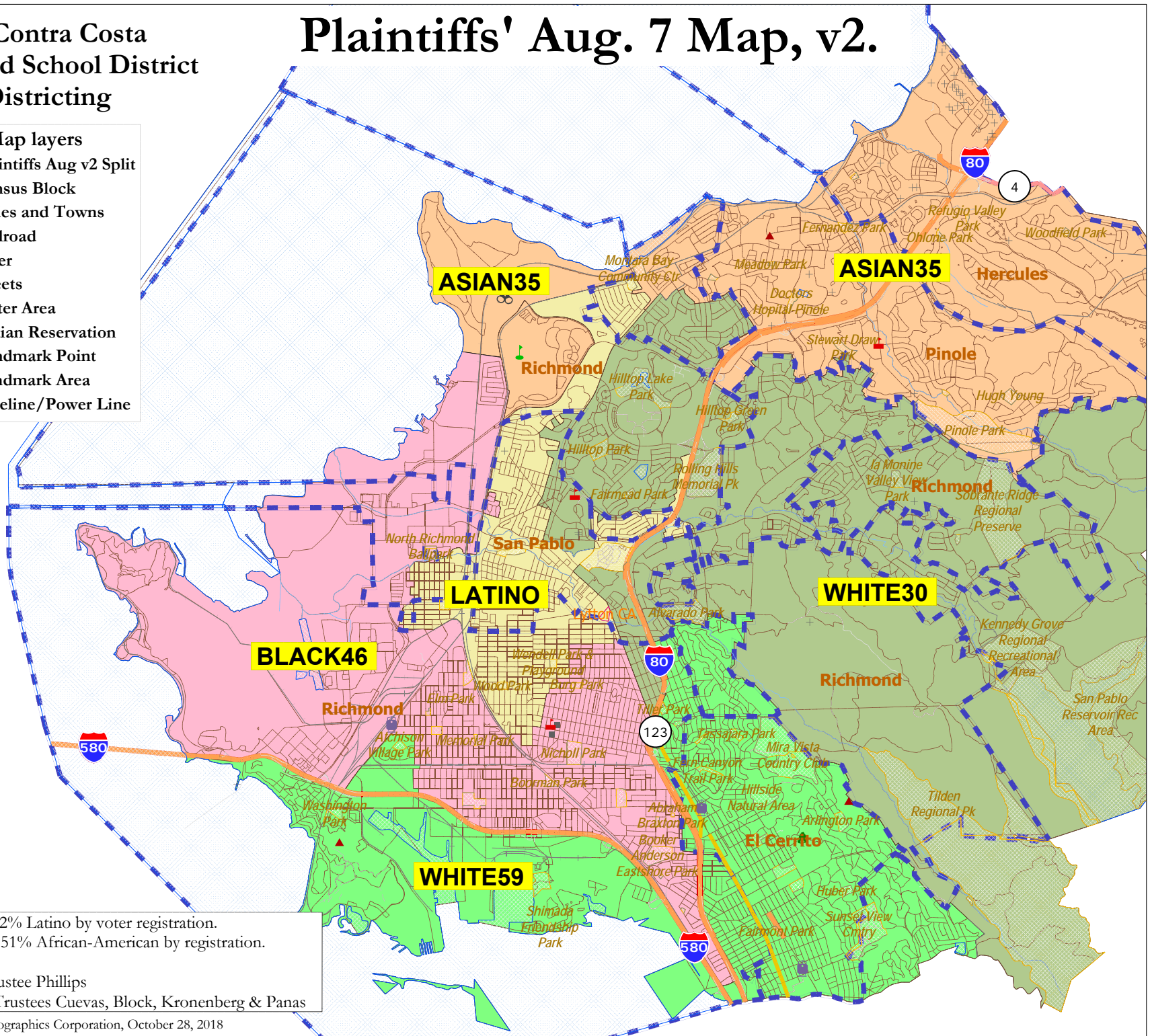
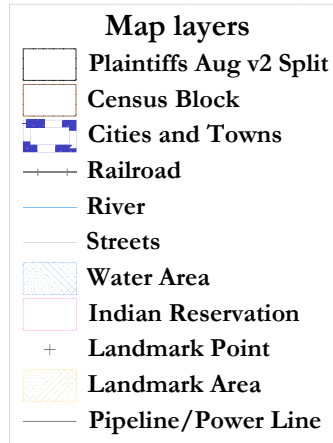


West Contra Costa
Unified School District
2018 Districting

Plaintiffs' Aug. 7 Map, v2.



"Latino" is 52% Latino by voter registration.
"Black46" is 51% African-American by registration.

"Latino": Trustee Phillips
"White59": Trustees Cuevas, Block, Kronenberg & Panas

National Demographics Corporation, October 28, 2018

WCCUSD - Plaintiffs' Aug. Map v2 Demographics							
District		ASIAN35	BLACK46	LATINO	WHITE30	WHITE59	Total
Ideal	Total Pop	45,749	47,235	46,843	49,110	46,910	235,847
47,169	Deviation from ideal	-1,420	66	-326	1,941	-259	3,361
	% Deviation	-3.01%	0.14%	-0.69%	4.12%	-0.55%	7.13%
Total Pop	% Hisp	18%	45%	66%	25%	13%	34%
	% NH White	26%	9%	8%	27%	51%	24%
	% NH Black	16%	36%	13%	23%	9%	19%
	% Asian-American	37%	8%	11%	21%	23%	20%
Citizen Voting Age Pop	Total	34,457	26,099	21,721	34,583	35,911	152,771
	% Hisp	16%	24%	50%	21%	9%	22%
	% NH White	29%	16%	14%	32%	59%	32%
	% NH Black	15%	45%	16%	23%	8%	21%
	% Asian/Pac.Isl.	37%	12%	18%	22%	22%	23%
Voter Registration (Nov 2016)	Total	26,184	21,875	16,386	26,830	32,718	123,994
	% Latino est.	24%	28%	52%	21%	9%	24%
	% Spanish-Surnamed	21%	25%	47%	19%	8%	21%
	% Asian-Surnamed	11%	3%	5%	8%	9%	7%
	% Filipino-Surnamed	6%	1%	2%	3%	1%	3%
	% NH White est.	39%	16%	18%	41%	70%	41%
	% NH Black	20%	51%	21%	27%	9%	24%
Voter Turnout (Nov 2016)	Total	19,588	13,224	9,881	19,516	27,025	89,234
	% Latino est.	23%	29%	54%	21%	9%	22%
	% Spanish-Surnamed	21%	26%	49%	18%	8%	20%
	% Asian-Surnamed	11%	3%	4%	8%	10%	8%
	% Filipino-Surnamed	6%	1%	2%	2%	1%	3%
	% NH White est.	44%	18%	27%	46%	71%	47%
	% NH Black	23%	52%	30%	28%	10%	25%
Voter Turnout (Nov 2014)	Total	10,632	6,925	4,243	10,707	17,832	50,340
	% Latino est.	17%	18%	41%	15%	7%	15%
	% Spanish-Surnamed	15%	16%	37%	13%	6%	14%
	% Asian-Surnamed	9%	3%	4%	7%	9%	7%
	% Filipino-Surnamed	4%	1%	3%	2%	1%	2%
	% NH White est.	48%	21%	25%	47%	74%	51%
	% NH Black est.	21%	57%	26%	29%	9%	24%
ACS Pop. Est.	Total	47,339	49,833	48,907	50,427	49,056	245,562
Age	age0-19	21%	29%	29%	21%	18%	24%
	age20-60	56%	57%	57%	57%	55%	56%
	age60plus	23%	14%	14%	22%	27%	20%
Immigration	immigrants	31%	35%	44%	30%	25%	33%
	naturalized	70%	31%	37%	56%	54%	48%
Language spoken at home	english	57%	44%	28%	56%	67%	50%
	spanish	14%	44%	56%	23%	10%	29%
	asian-lang	21%	8%	12%	13%	13%	14%
	other lang	8%	4%	4%	8%	10%	7%
Language Fluency	Speaks Eng. "Less than Very Well"	16%	28%	38%	20%	14%	23%
Education (among those age 25+)	hs-grad	53%	54%	51%	59%	35%	50%
	bachelor	25%	12%	10%	19%	31%	20%
	graduatedegree	11%	5%	3%	9%	28%	12%
Child in Household	child-under18	29%	34%	41%	26%	23%	30%
Pct of Pop. Age 16+	employed	62%	57%	58%	59%	63%	60%
Household Income	income 0-25k	10%	29%	25%	16%	12%	18%
	income 25-50k	16%	28%	27%	21%	16%	21%
	income 50-75k	17%	18%	20%	19%	17%	18%
	income 75-200k	48%	23%	27%	39%	43%	37%
	income 200k-plus	9%	2%	2%	6%	13%	7%
Housing Stats	single family	82%	62%	71%	70%	73%	72%
	multi-family	18%	38%	29%	30%	27%	28%
	rented	26%	60%	54%	43%	38%	44%
	owned	74%	40%	46%	57%	62%	56%
Total population data from the 2010 Decennial Census.							
Surname-based Voter Registration and Turnout data from the California Statewide Database.							
Latino voter registration and turnout data are Spanish-surname counts adjusted using Census Population Department undercount estimates. NH White and NH Black registration and turnout counts estimated by NDC. Citizen Voting Age Pop., Age, Immigration, and other demographics from the 2012-2016 American Community Survey and Special Tabulation 5-year data.							